

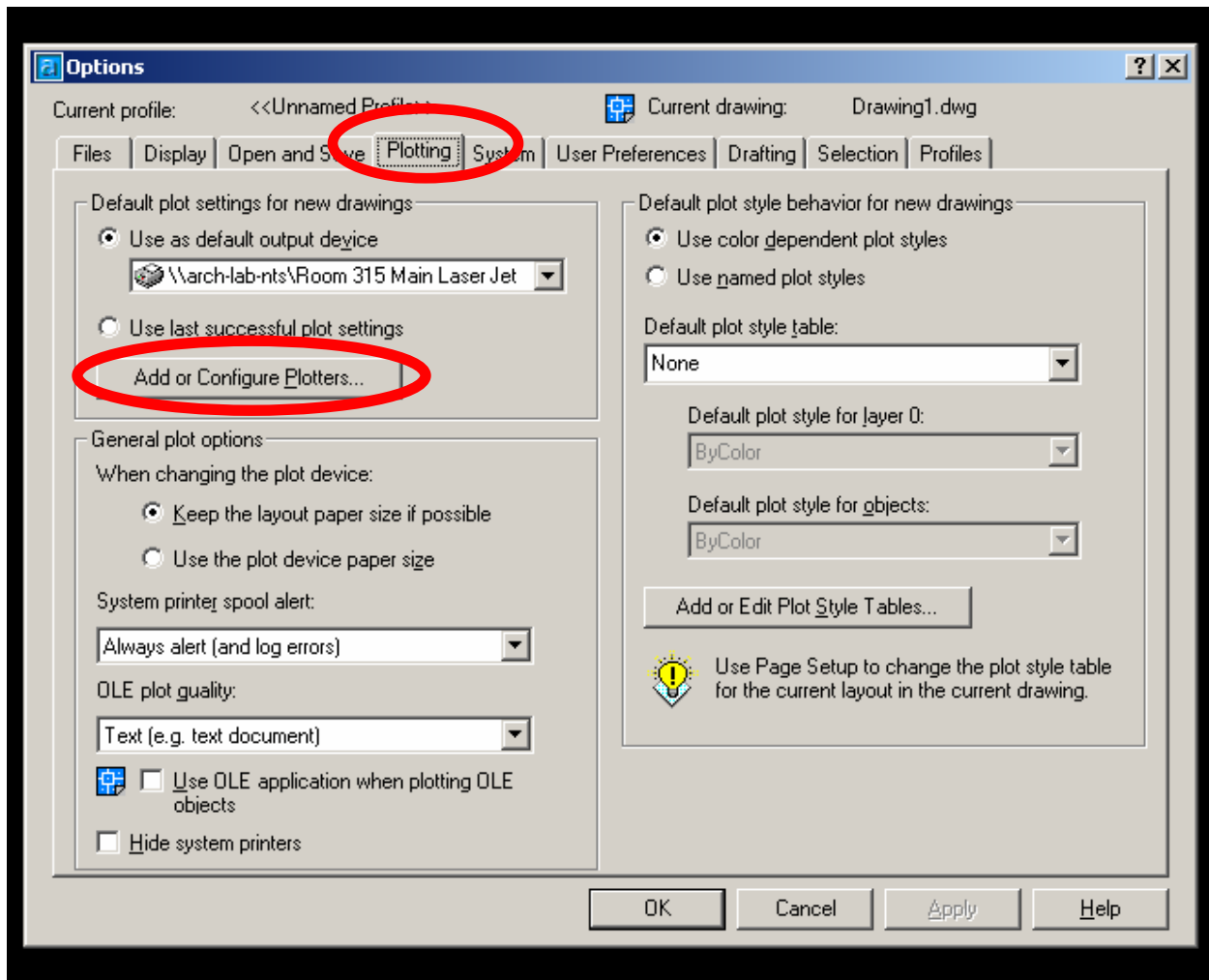
The Lab Op

Tip of the Week

April 5, 2004

To import an AutoCAD Drawing into Photoshop to scale

1. In AutoCAD type the command "Options"
2. Click on the "Plotting" tab
3. Click "Add or Configure Plotters..."

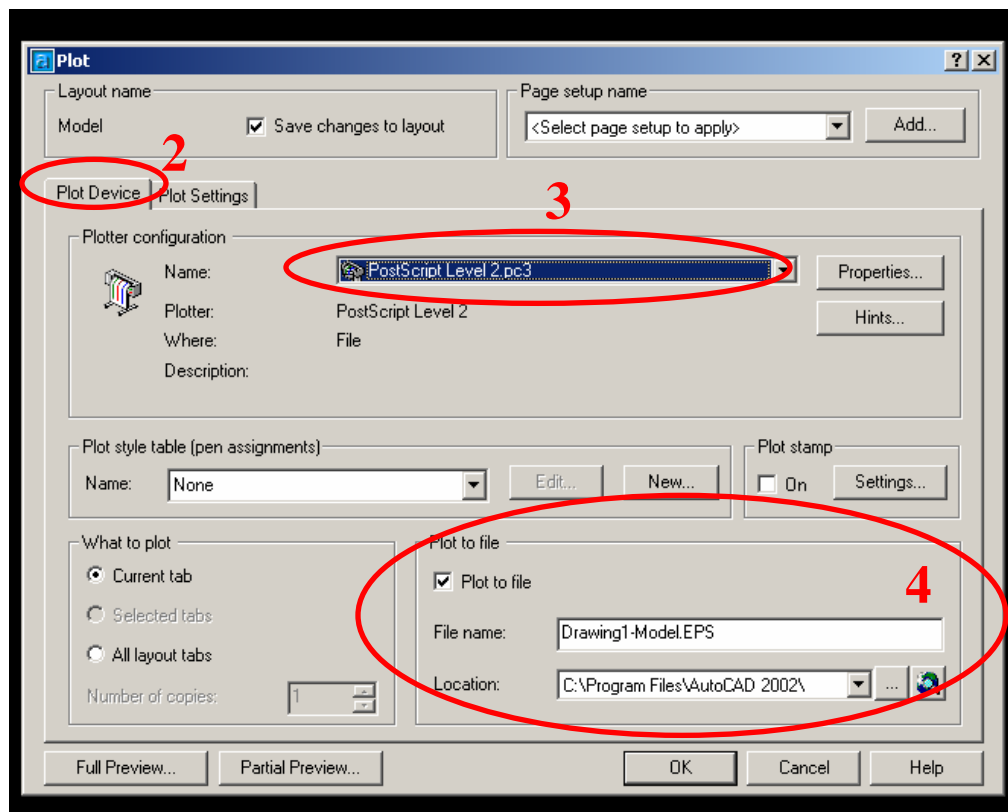


4. Click the "Add a Plotter Wizard" icon
5. Click "Next" twice

6. On the next window choose "Adobe" in the left window and "Postscript Level 2" in the right window. Click "Next".
7. Click "Next" again
8. When the "Ports" window pops up choose "Plot to File" in the upper right hand portion of the window. Click "Next"
9. Choose a different name for the plotted if you want to.
10. Click "Next" then "Finish"; Close the "Plotters" window and the "Options" window

Steps 1-10 need only to be done the first time you export to Photoshop on a computer.

1. Type the "Plot" command in AutoCAD
2. Click on the "Plot Device" tab
3. Choose the printer that you set up in the previous steps
4. In the lower right hand corner choose the name and location of the file to be exported.



5. Click on the "Plot Settings" tab and set up the plot like you normally would.
6. After you click "OK" the EPS file will appear in the location you chose to save it.
7. Open Photoshop and chose "Open" from the "File" menu
8. Select your file to bring up the EPS import menu.
9. Do not change the size of the file unless you want to change its scale. You want to choose a resolution of at least 150 dpi which will make larger files open more slowly, but this is needed for quality. Press "OK"

After a few moments your drawing will be in a Photoshop window. You will need to insert a white background to see your lines. If the lines look jagged zoom to 100%. To have white lines on a black background just insert a black background and invert the layer with the drawing on it.

And finally the mystery of how to import an AutoCAD drawing into Photoshop is solved.

- The Lab Ops
(DJL)